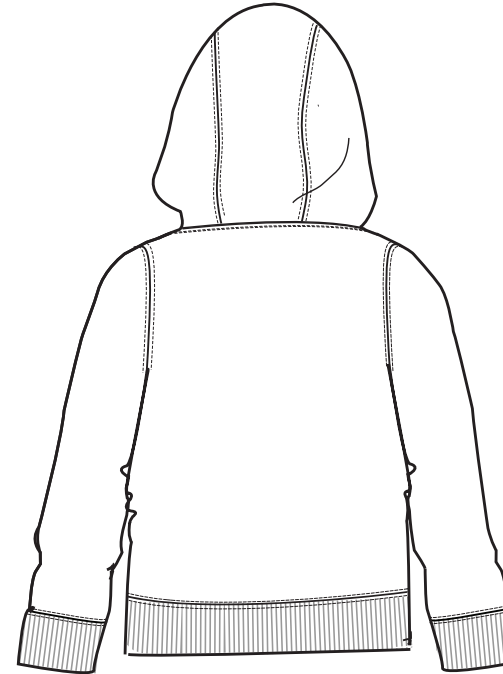
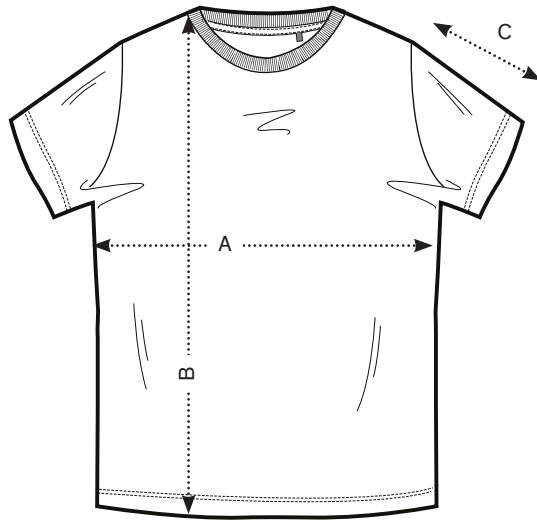


FRONT

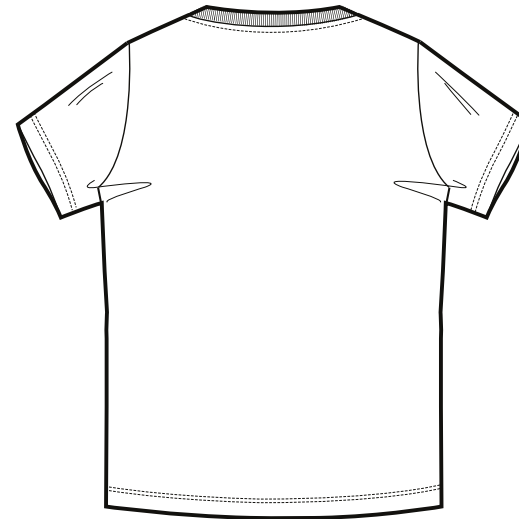


BACK

SIZES		XS	S	M	L	XL	XXL	XXXL
A	Half Chest 2,5cm below armhole	48,5	51	53,5	56	59	62	65
B	Body Length (from HPS)	65	67	69	71	73	75	77
C	Sleeve length	75	76,5	78	79,5	81	82,5	84

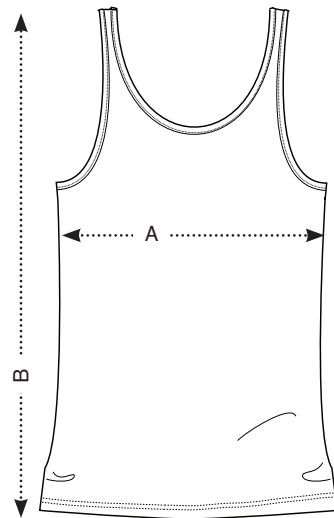


FRONT



BACK

SIZES		XS	S	M	L	XL	XXL	XXXL
A	Half Chest 2,5cm below armhole	45	48	51	54	57	60	63
B	Body Length (from HPS)	67,5	69,5	71,5	73,5	75,5	77,5	79,5
C	Sleeve length	18,5	19,5	20,5	21,5	22,5	23,5	24,5

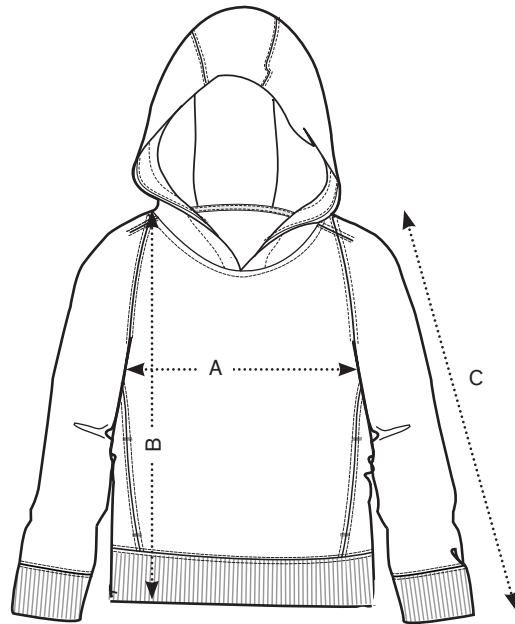


FRONT

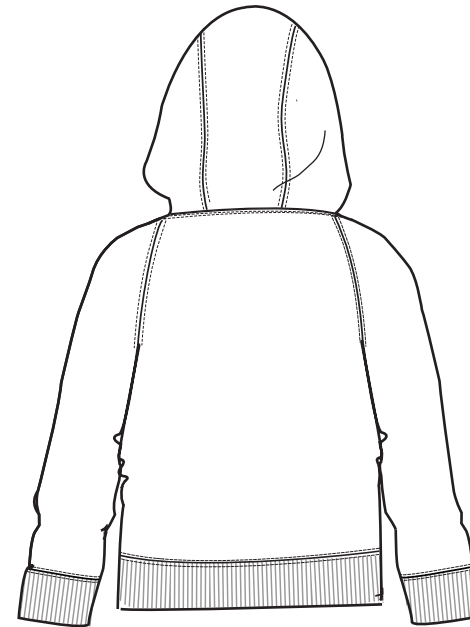


BACK

SIZES		XS	S	M	L	XL
A	Half Chest 2,5cm below armhole	36,5	39	41,5	44,5	47,5
B	Body Length (from HPS)	62	64	66	68	70

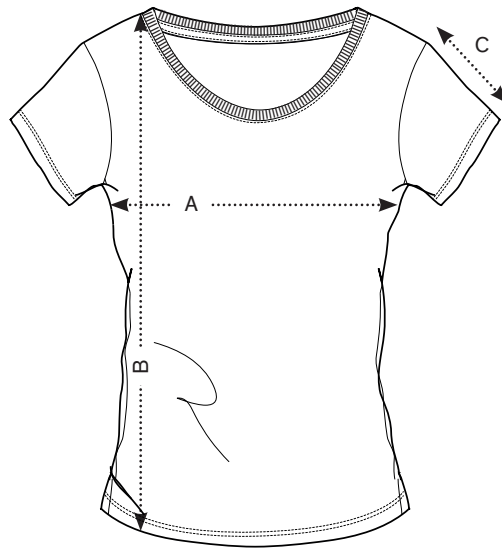


FRONT

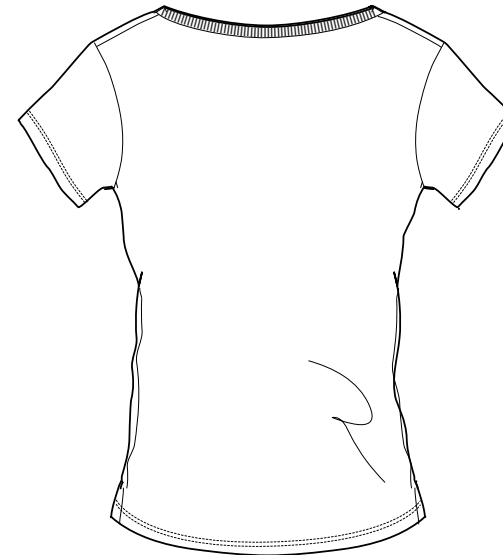


BACK

SIZES		XXS	XS	S	M	L	XL	XXL
A	Half Chest 2,5cm below armhole	41,5	44	46,5	49	52	55	58
B	Body Length (from HPS)	58	60	62	64	66	68	70
C	Sleeve length	68,5	70	71,5	73	74,5	76	77,5



FRONT



BACK

SIZES		XXS	XS	S	M	L	XL	XXL
A	Half Chest 2,5cm below armhole	36	38,5	41	43,5	46,5	49,5	52,5
B	Body Length (from HPS)	60,5	62,5	64,5	66,5	68,5	70,5	72,5
C	Sleeve length	13	13,5	14	14,5	15	15,5	16